

12 UNIT WATERFRONT APARTMENT COMPLEX FOR SALE \$1,599,000

14231 & 14257 N. Bayshore Drive, Madeira Beach



Beautiful open water views with 160' of frontage on the Intracoastal Waterway, just 3 blocks to the Gulf of Mexico and it's sandy beaches

12 units in 2 adjacent buildings; 14231 has one 2br/1ba, four 1br/1ba and two large studios, and 14257 has three 1br/1ba, one 2br/1ba, & 2 studios

The Waterview Inn has a pool & deck overlooking the bay for lovely tropical ambience

One dock on each property with a total of 4 boat slips; may be expandable to 8

Located in the city limits of Madeira Beach, the zoning is R-2, which would allow for a total of six townhomes.

Tenants are on annual leases, and pay their own electric bills

An adjacent property may be available for purchase as well and the 3 lots would total about 240 ft of water frontage

For additional information or to schedule an appointment to tour the property, please contact:

Pat Calhoon, Commercial Broker 727.542.0998 | pcalhoon@smithandassociates.com | www.patcalhoon.com

1.855.580.3758 www.smithandassociates.com

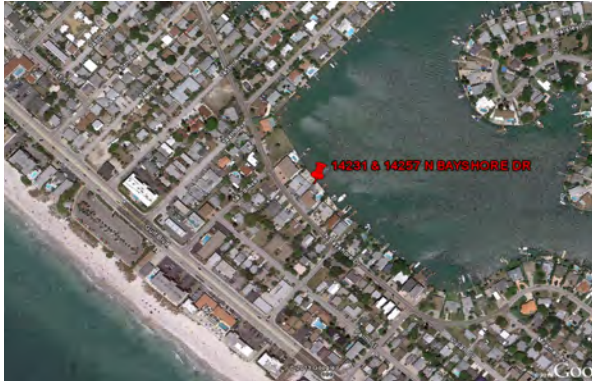
Tampa | St. Petersburg | Clearwater

Smith & Associates Real Estate, Inc does not guarantee any representations. Important facts should be confirmed by buyer.

Smith &
Associates Commercial

12 UNIT WATERFRONT APARTMENT COMPLEX FOR SALE \$1,599,000

14231 & 14257 N. Bayshore Drive, Madeira Beach



For additional information or to schedule an appointment to tour the property, please contact:

Pat Calhoun, Commercial Broker 727.542.0998 | pcalhoon@smithandassociates.com | www.patcalhoon.com

1.855.580.3758 www.smithandassociates.com

Tampa | St. Petersburg | Clearwater

Smith & Associates Real Estate, Inc does not guarantee any representations. Important facts should be confirmed by buyer.

Smith &
Associates Commercial