

646 2nd Avenue S, St. Petersburg



Excellent opportunity lease a beautifully remodeled and modernized office building in the desirable downtown St Petersburg market

3,750 square feet of downstairs space, with individual offices, conference rooms, work space, break room and restrooms; upstairs has 1,350 square feet, about half of which is storage

Competitively priced at \$ 10.00 per square foot, on a modified gross basis

Plenty of non-metered on street parking, with easy access to all of the downtown and Central Ave amenities

Ideal for legal, accounting, advertising, or any other professional firm interested in being a part of this exciting area

Pat Calhoon, Commercial Broker 727.542.0998 | pcalhoon@smithandassociates.com | www.patcalhoon.com

1.855.580.3758 www.smithandassociates.com

 LEADING REAL ESTATE
COMPANIES OF THE WORLD™ Tampa | St. Petersburg | Clearwater

Smith & Associates Real Estate, Inc does not guarantee any representations. Important facts should be confirmed by buyer.

Smith &
Associates Commercial

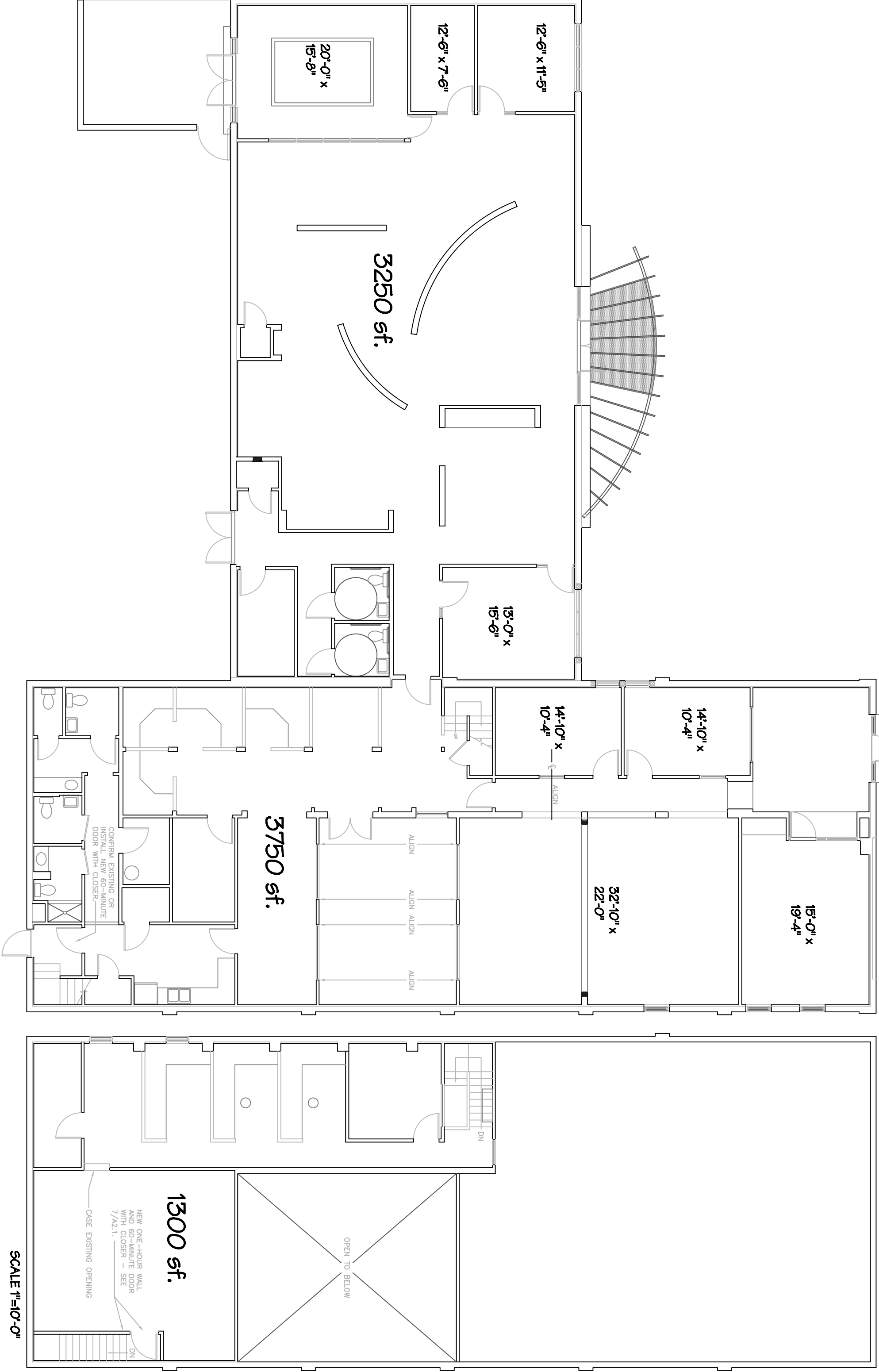
DOWNTOWN OFFICE BUILDING For Lease



1.855.580.3758 www.smithandassociates.com

LEADING REAL ESTATE COMPANIES OF THE WORLD™ Tampa | St. Petersburg | Clearwater
Smith & Associates Real Estate, Inc does not guarantee any representations. Important facts should be confirmed by buyer.

**Smith &
Associates Commercial**



SCALE 1"=10'-0"